



M Luis Construction Co., Inc. - Capability Statement

About Us

M Luis is a regional Asphalt Paving and Concrete Construction Firm, serving the Maryland/DC Region. We specialize in asphalt milling, patching, and overlay projects, as well as flatwork concrete construction to include new and reconstruction projects. The company is a woman/minority/SBA WOSB owned firm.



Company Snapshot

Business Name: M Luis Construction Co., Inc.
Corporation Type: C-Corp
Year Founded: 1985
Business Phone: 410-545-0641
Unique Entity ID: M46KVE28T1Y4
Cage Code: 0M8M2
Social Economic Status: MBE, WBE
Contractor Licenses:
MD: 16962305
DC: 410520000583
VA: 2705161069
TIN: 52-1418763

NAICS Codes

- 237310** – Highway, Street, and Bridge Construction
- 237110** – Water and Sewer Line and Related Structures Construction
- 237990** – Other Heavy and Civil Engineering Construction
- 238110** – Poured Concrete Foundation and Structure Contractors
- 238910** – Site Preparation Contractors
- 238990** – All Other Specialty Trade Contractors
- 541330** – Engineering Services

Past Performance

- Montgomery County, Maryland
- City of Baltimore DOT and DPW
- City of Rockville
- City of Gaithersburg
- Baltimore Gas & Electric (BGE)
- Verizon
- Maryland State Highway Administration
- Maryland Port Administration
- Pepco (CW & Sons)
- Noman Cole Wastewater Treatment Plant
- Backwater Wastewater Treatment Plant

Point of Contact:
Walt Leizar, 410-301-4498
Leo Domingues, 240-882-6430
Paul Bruce, 240-204-0837

✉ estimating@mluisconstruction.com
☎ **Office: 410-545-0641**
🌐 www.mluisconstruction.com

*Building Roads for the
Next Generation*



Certifications

- Baltimore City: MBE #04-004495-MBE
- Baltimore City: WBE #04-004495-WBE
- Baltimore County: M/WBE #04-004495
- Montgomery County: MFD/MBE/WBE/LBPP
- Prince George's County: MBE-23-17001
- DC Water: WBENC
- Howard County: MBE #M21-55
- WBENC: #2005116175
- WOSB: #171538
- WSSC: WBENC

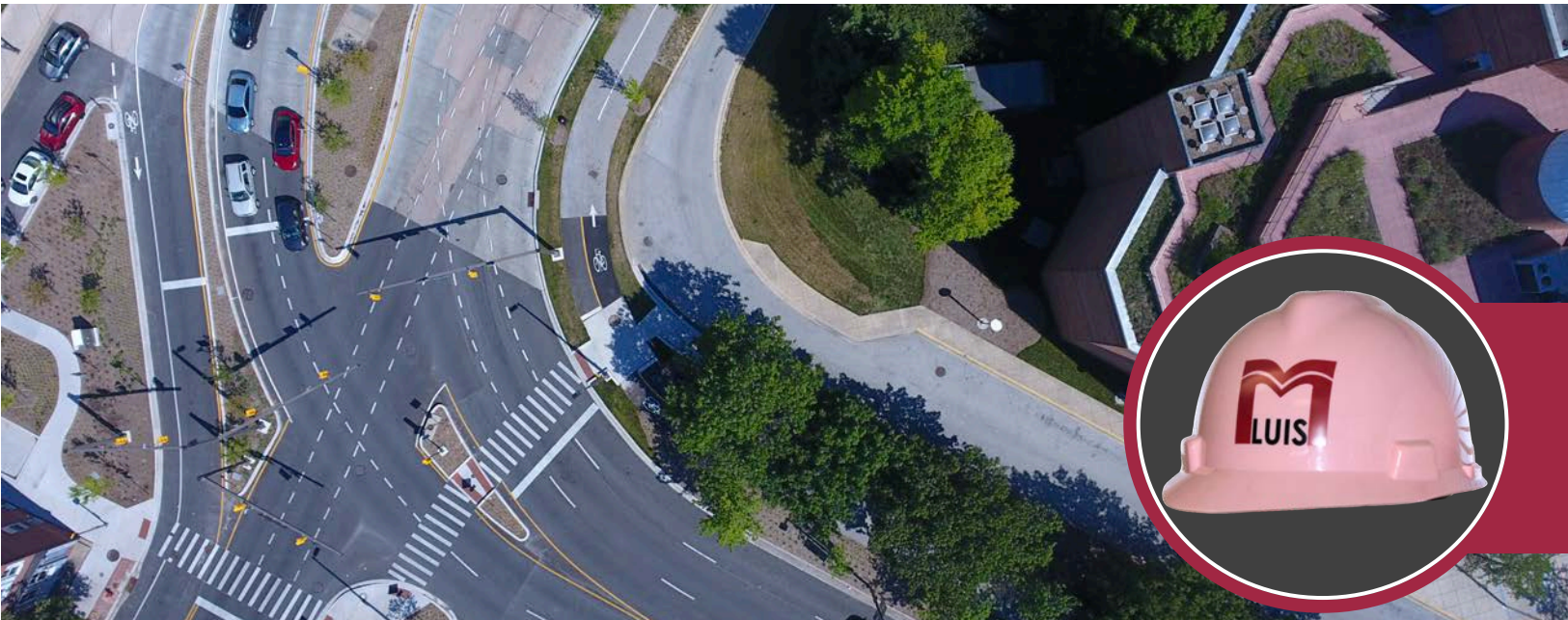


Differentiators

- Superior customer service – direct access to field/project managers and asphalt plant managers
- Asphalt manufacturer and paving contractor
- Over 35 years of flatwork concrete expertise
- Local minority- and woman-owned family business
- Offers WBE/MBE utilization
- Solution oriented and driven professionals
- Green supplier of asphalt materials

Core Competencies

- Asphalt Manufacturing
- Asphalt and Concrete Paving
- Milling and Grinding
- Roadway Reconstruction
- Pavement Fabric Installation
- Storm Water Management
- Utility and Ductbank Construction
- Roadway Striping
- Flatwork Concrete
- Liquid Asphalt, Aggregate and Sand Reseller



PSC Codes

- Y1LA – Construction of Airport Service Roads
- Y1KB – Construction of Highways, Roads, Streets, Bridges, and Railways
- Y1LZ – Construction of Parking Facilities
- Y1ND – Construction of Sewage and Waster Facilities
- Y1NE – Construction of Water Supply Facilities
- Y1NZ – Construction of Other Utilities
- Y1PA – Construction of Recreation Facilities (Non-Bldg)
- Y1PC – Construction of Unimproved Real Property (Land)
- Y1PD – Construction of Waste Treatment and Storage Facilities
- Y1PZ – Construction of Other Non-Building Facilities
- Z1LA – Maintenance of Airport Service Roads
- Z1LB – Maintenance of Highways, Roads, Streets, Bridges, and Railways
- Z1LZ – Maintenance of Parking Facilities
- Z2LA – Repair or Alteration of Airport Service Roads
- Z2LB – Repair or Alteration of Highways, Roads, Streets, Bridges, and Railways
- Z2LZ – Repair or Alteration of Parking Facilities
- Z2PA – Repair or Alteration of Recreation Facilities (Non- Bldg)
- Z2PZ – Repair or Alteration of Other Non-Building Facilities

Point of Contact:

Walt Leizear, 410-301-4498
Leo Domingues, 240-882-6430
Paul Bruce, 240-204-0837



Headquarters: 12200 Plum Orchard Drive, Suite 110, Silver Spring, MD 20904



Rockville Plant: 14822 Southlawn Lane, Rockville, MD 20850



Glen Burnie Plant: 97 Dover Road NE, Glen Burnie, MD 21060